



What is SEL?

Social and Emotional Learning



Dr. Chase Stinson

Director of Special Education and
Student Services



Social & Emotional Learning



Social & Emotional Learning-School Safety

Multi Tiered System of Support - individual building teams

Role of the School Counselor

Mental Health Services/Partnerships - Aspire/Four County

Dessa (The Devereux Student Strengths Assessment) - - -
-social/emotional assessments

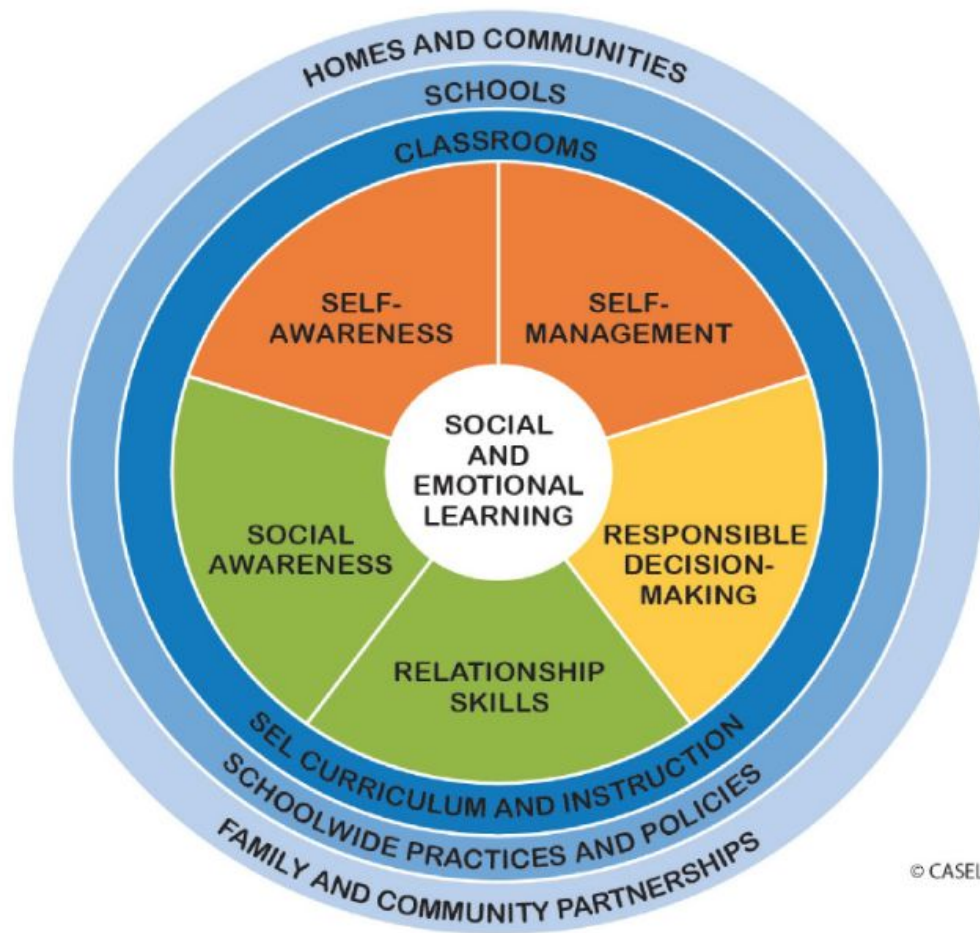
Panorama-climate and culture survey

Bullying-Reporting to school office/principal/teacher/online
reporting-TIPS



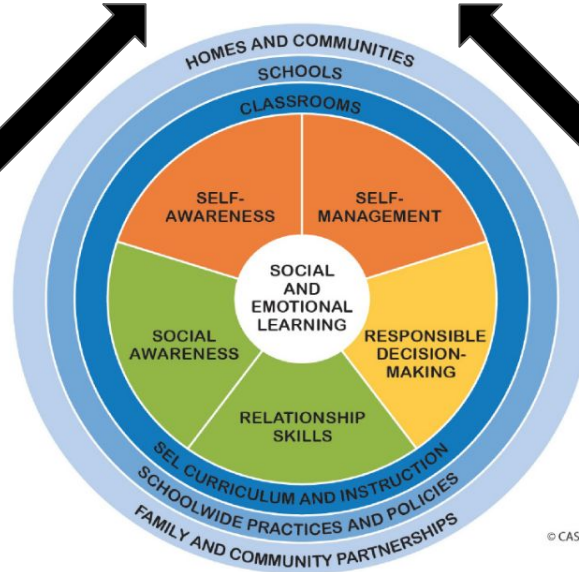
Definition...

Social and emotional learning (SEL) is the process through which students and adults acquire, develop, and apply the knowledge, skills, and attitudes necessary to successfully navigate life in five distinct areas:



District Approach to Social Emotional Learning to achieve District Framework

Culture and Climate (Beliefs, Awareness, Listening, Learning)



© CASEL 2017



Academic Curriculum Areas/
Instructional Practices and
Community

Phase I: Adult to Adult Relationships
Phase II: Adult to Student Relationships
Phase III: Student to Student Relationships
Phase IV: Refinement and Sustainability

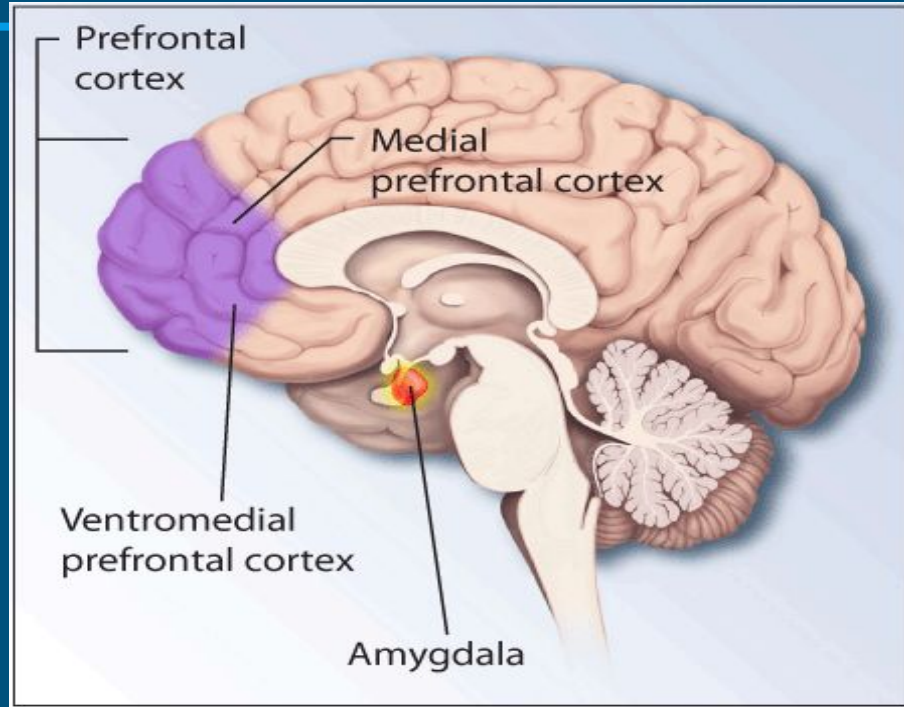


Explicit SEL Instruction and SEL
Assessment (Research and
Evidence-Based Practice and Support)

What does it look like in our schools / classrooms...

- School-wide K- 6 adoption of Life Goals, Life Lines, Seven Habits.
- Power of 5 in grades 7-12.
- H.S. Freshman mentor program.
- Instructional strategies (collaboration, group work, brain breaks, etc.).
- Mindfulness / Focused Attention Practices (i.e. breathing, understanding how to be present, monitor and adjust self-talk).
- Calm corners / “De-Stress Den M.S.”
- It goes beyond a “program” or a specific curriculum!!
- Humanizing our interactions with each other.
- “Building skills with our students so when they are 35, you would be o.k. living next door to them.”

Teaching about the brain



Brain Structures Involved in Dealing with
Fear and Stress

